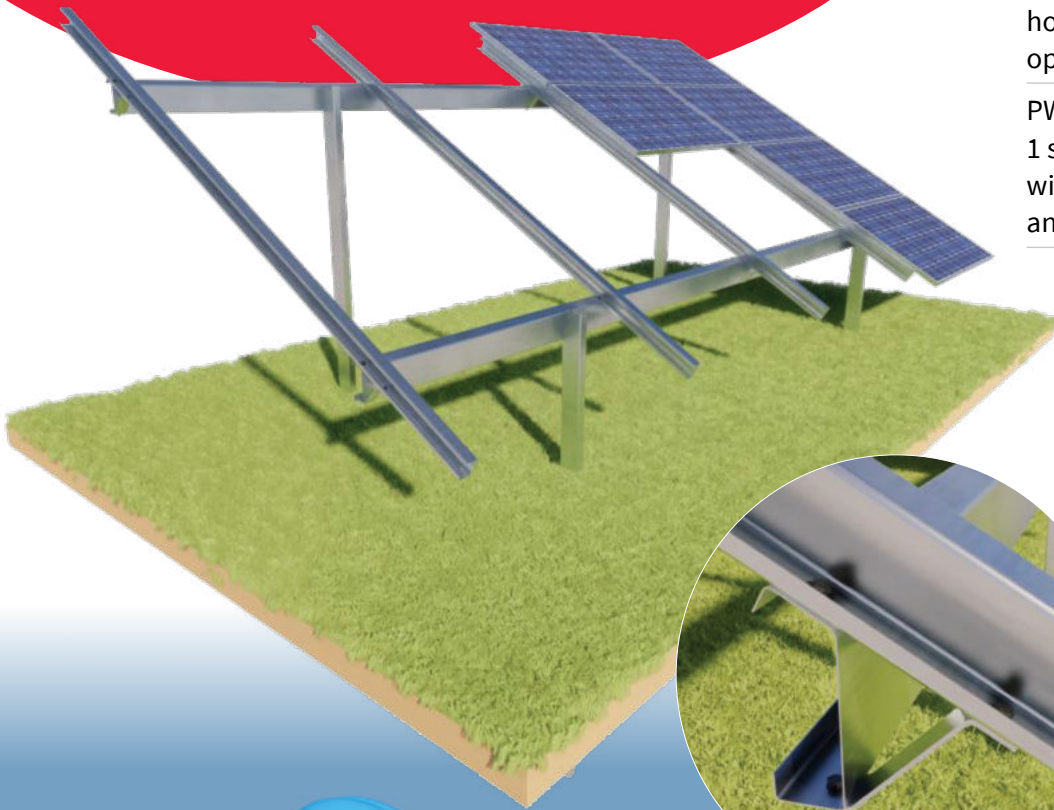


PW-System

Solar panel support structure description

Pannonwatt Zrt. has been developing its self-manufactured solar panel structures based on the experience accumulated during construction of various solar parks with the total capacity of several hundred megawatts. The PW-SYS structures are made of increased durability, hot-dip galvanized, or special, Magnelis-coated steel, thus guaranteeing maintenance-free operation for a minimum of 25 years. The system is modular, therefore it meets all installation needs, either a configuration of a 20–25–30–35° tilt angle or a vertical or horizontal solar structure. With the help of our unique solutions this product range allows us to realize all the needs and ideas of our customers and partners.



H4-PW60/72

Arrangement of modules:

4-row, horizontal

Tilt angle: 20°/25°/30°/35°**Installation:**

post driven ground mount

Solar module size:

60-cell (120 half-cell)

72-cell (144 half-cell)

Material:

high strength structural steel
S350GD

Anti-corrosion coating:

hot-dip galvanizing
optional Magnelis coating

PW System also meets Eurocode 1 standard, and are sized to withstand up to 110km/h wind load and 100 cm snow.

**PW-SYS**

by Pannonwatt

Online Configurator

For further information and offers, please do not
hesitate to contact us.

+36 20 355 5152 • info@pwsystem.hu • www.pwsystem.hu